

Flight Planning

the Easy way!

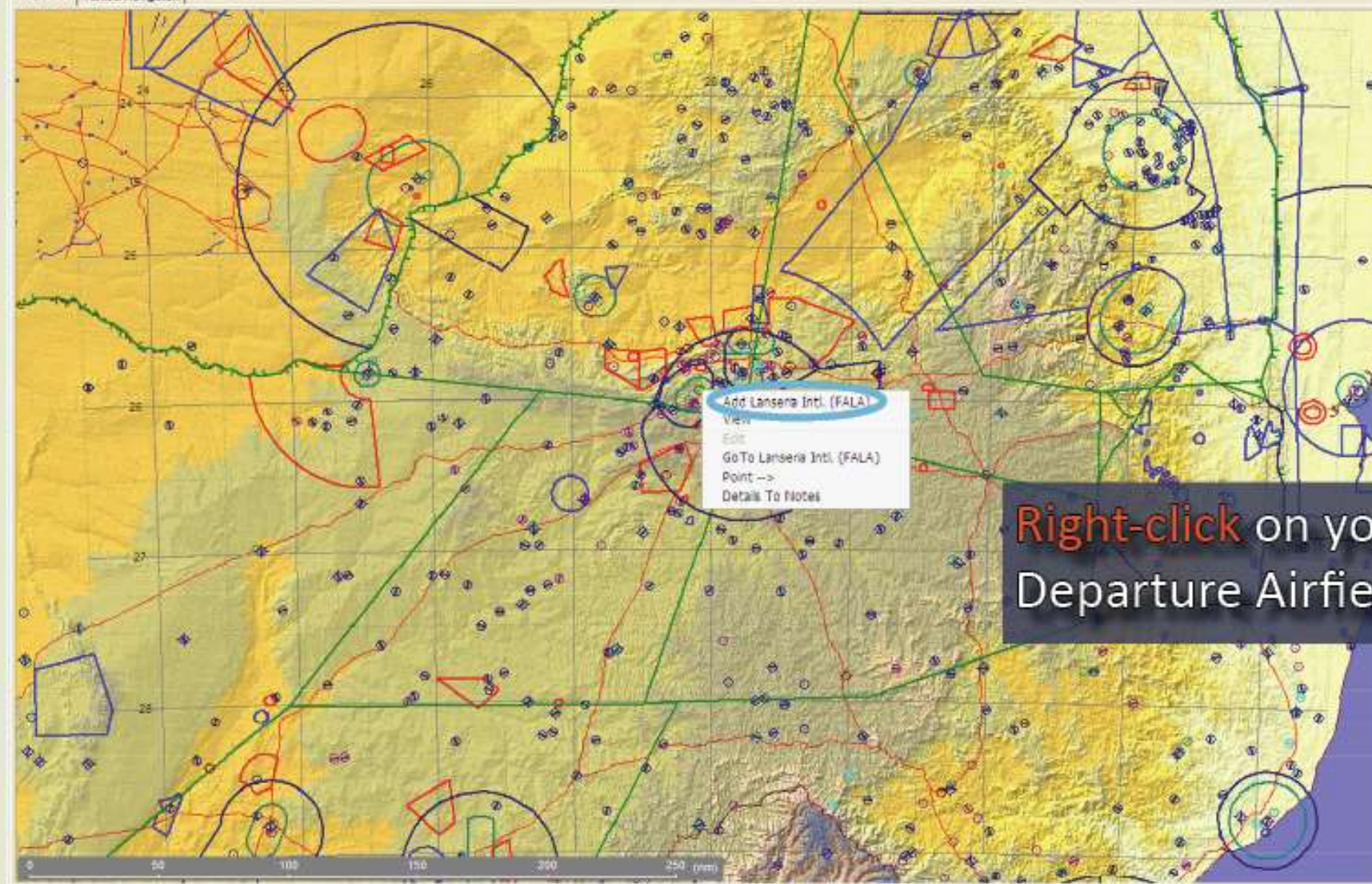
Flight Planning can be done either in “Map View” or
in the “Flight Log”.

File Route/Aircraft Points Log Book Easy Cockpit Export Help



Flight Log **Map** Flight Plan Aircraft Data GPS Interface Log Book Tools Units + Preferences Test Weather

Map View Vertical Navigation



Right-click on your
Departure Airfield

ZU OJL

525 56.8 E027 55.7

Ground 4524 feet

File Route/Aircraft Points Log Book Easy Cockpit Export Help



Flight Log Map Flight Plan Aircraft Data GPS Interface Log Book Tools Units + Preferences Test Weather

Map View Vertical Navigation



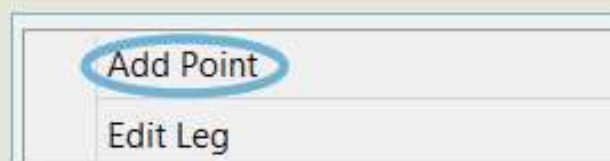
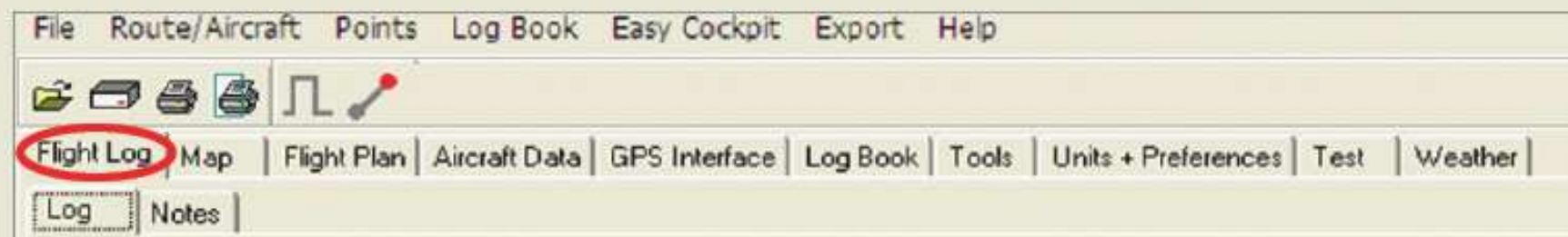
Then **Right-click** on
your destination
airfield. Select Add.

Add Bloemfontein (New Tempe) (FATP)
View
Edit
Go To Bloemfontein (New Tempe) (FATP)
Point <->
Details To Notes

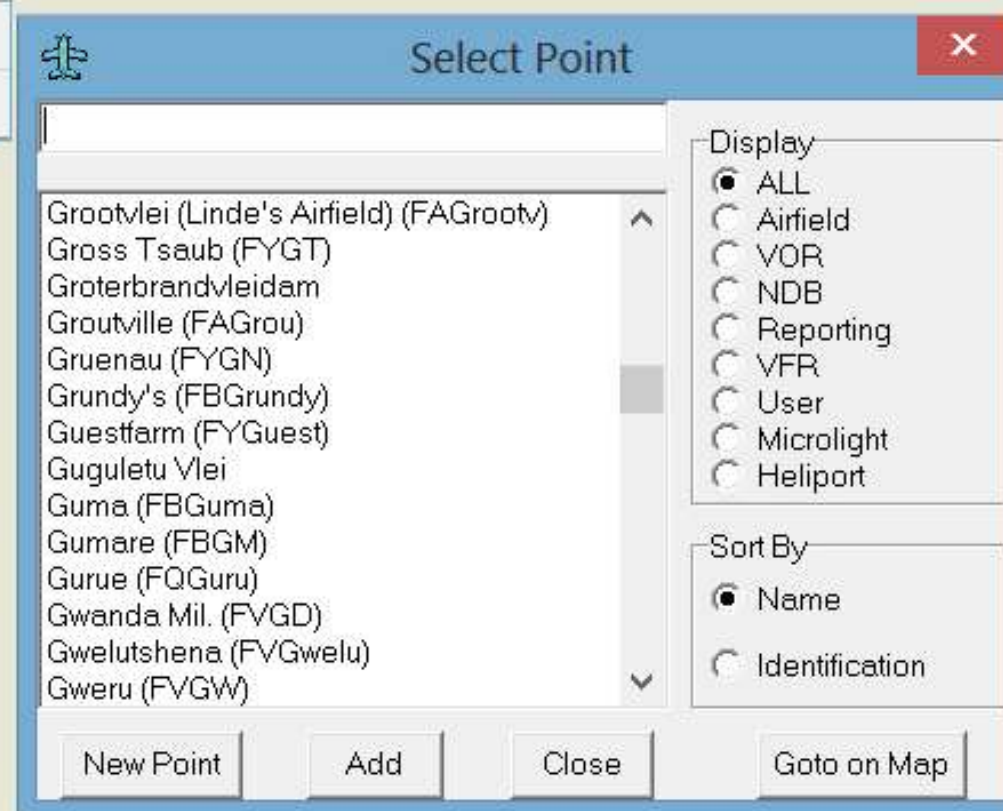
ZU CUL - Lanseria Intl

528 59.9 E 026 08.1

Ground: 4403 feet



If you want to find an airfield, you can also right click, add a point and find or type in the name of the airfield you want to add.



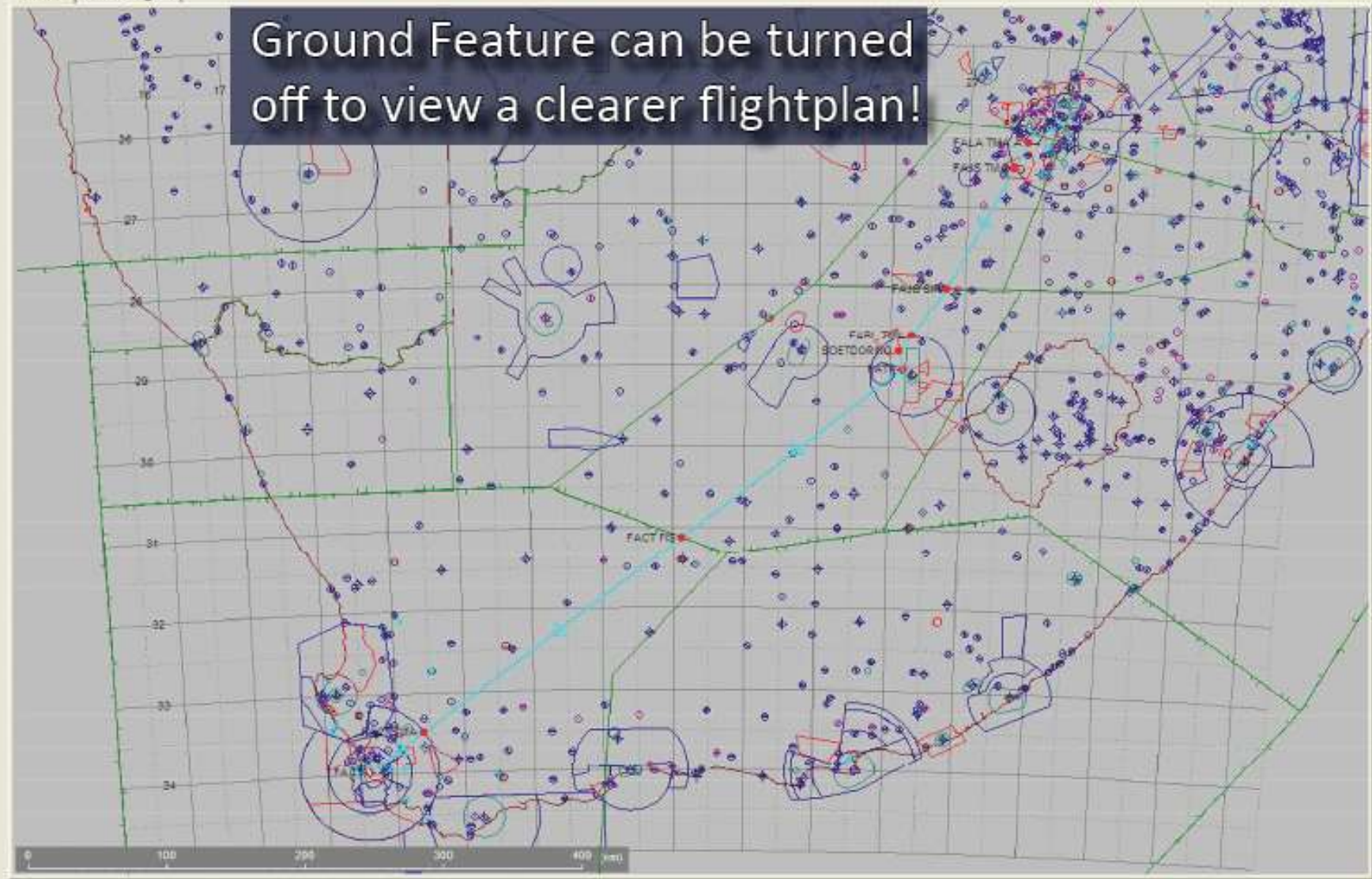
File Route/Aircraft Points Log Book Easy Cockpit Export Help



Flight Log Map Flight Plan Aircraft Data GPS Interface Log Book Tools Units Preferences Test Weather

Map View Vertical Navigation

Ground Feature can be turned off to view a clearer flightplan!



ZUL - Cape Town Intl

S34 38.9 E031 43.7

To insert a flight boundary, **Left-Click** on the leg to select it (the line turns green)

Then **Right-Click** to insert selected flight boundary either from the list or ...

- Add Point
- Insert Point
- Insert Way-point
- Insert Flight Boundary**
- Delete Cape Town Intl. (FACT)
- View
- Display Leg Details
- Edit Leg

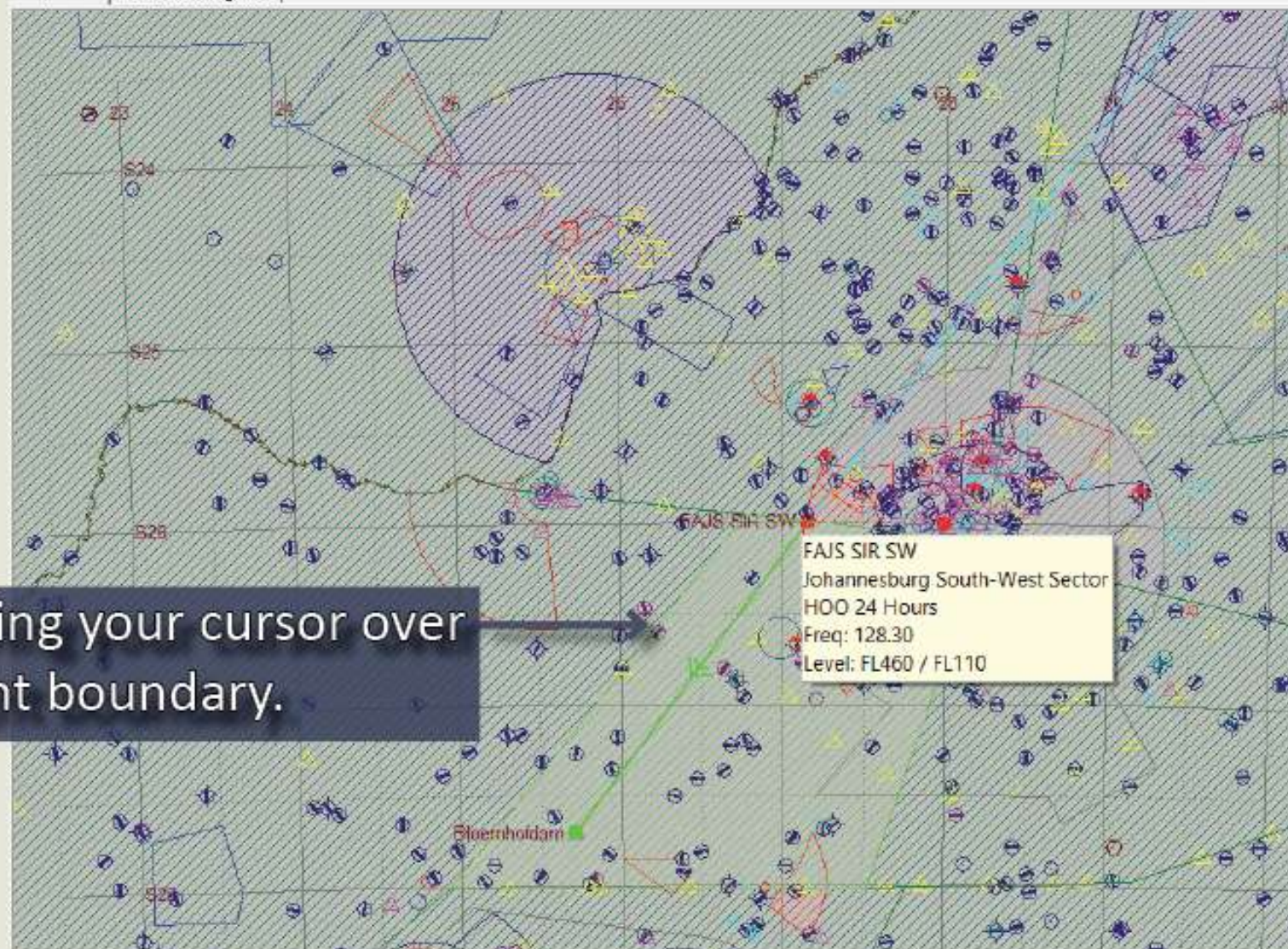
- 0) FACT CTR
- 1) FAD 159
- 2) FAJS CENTRAL SSR
- 3) FACT WEST SSR
- 4) FACT WEST FIS
- 5) FACT FIR
- 6) FAJS FDR
- 7) FACT Special Rules East
- 8) FACT TMA E
- 9) FACT TMA B
- 10) FACT TMA A
- 11) FACT UTA A
- 12) FACT UTA B
- 13) FABL CTA A
- 14) FACT CTA

File Route/Aircraft Points Log Book Easy Cockpit Export Help



Flight Log Map Flight Plan Aircraft Data GPS Interface Log Book Tools Units + Preferences Weather

Map View Vertical Navigation



By moving your cursor over the flight boundary.

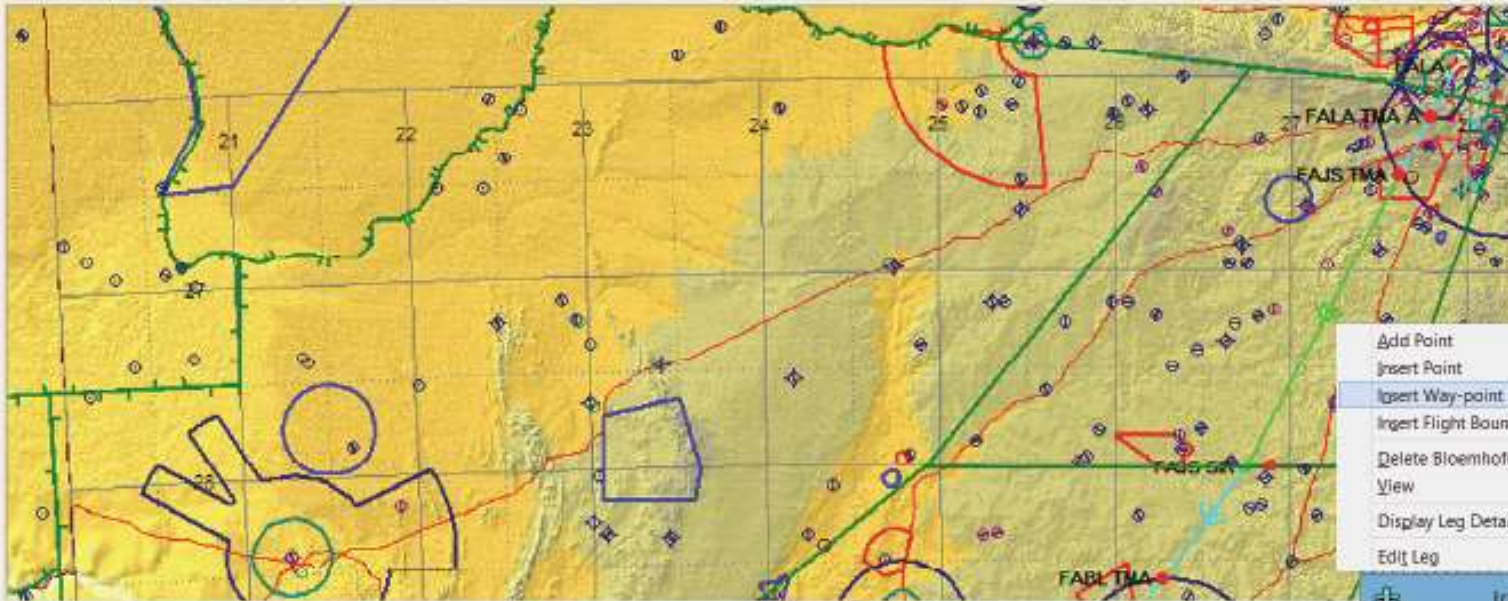
FAJS SIR SW
Johannesburg South-West Sector
HOD 24 Hours
Freq: 128.30
Level: FL460 / FL110

File Route/Aircraft Points Log Book Easy Cockpit Export Help



Flight Log Map Flight Plan Aircraft Data GPS Interface Log Book Tools Units & Preferences Tool Weather

Map View Vertical Navigation



To insert Waypoint or Abeam Waypoint, **Left Click** on leg to highlight the leg, then **Right Click** on a Point and select from the pop up menu. You have the option to insert that point on track or at any coordinates (mouse position).

Inserting Way-point

Name: Way-point

Identifier: WPT01

Frequency:

Nav Freq:

Point Position

☒ On Track

☐ At Co-ordinates

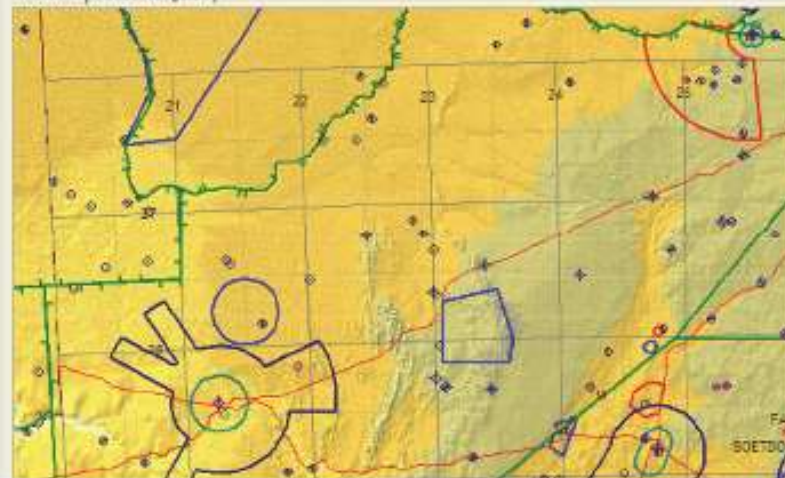
Elevation: 5026 feet

FAJS SOUTH-WEST SIR 64 Bloemhofdam 85 (nm)

☐ Include in Flight Plan

☐ Include in EET

Cancel OK



Add Point

Insert Point

Insert Way-point

Insert Flight Boundary

Delete Bloemhofdam

View

Display Leg Details

Edit Leg

Add Point will add a selected point from the database at the end of the Flight Plan.

Insert Point will insert a selected point from the database into the Flight Plan leg.

Insert Way Point will insert a point selected with your mouse (at Co-ordinates) or a point on track, which will automatically insert the point between the two current leg points. You can move that point on the slider.

Insert Way-point

Name: Way-point

Identifier: WPT01

Frequency: Elevator: feet

Nav Freq:

FAB, TMA 07 (nm) FACT FIR 03 (nm)

☐ Include in Flight Plan

☐ Include in EET

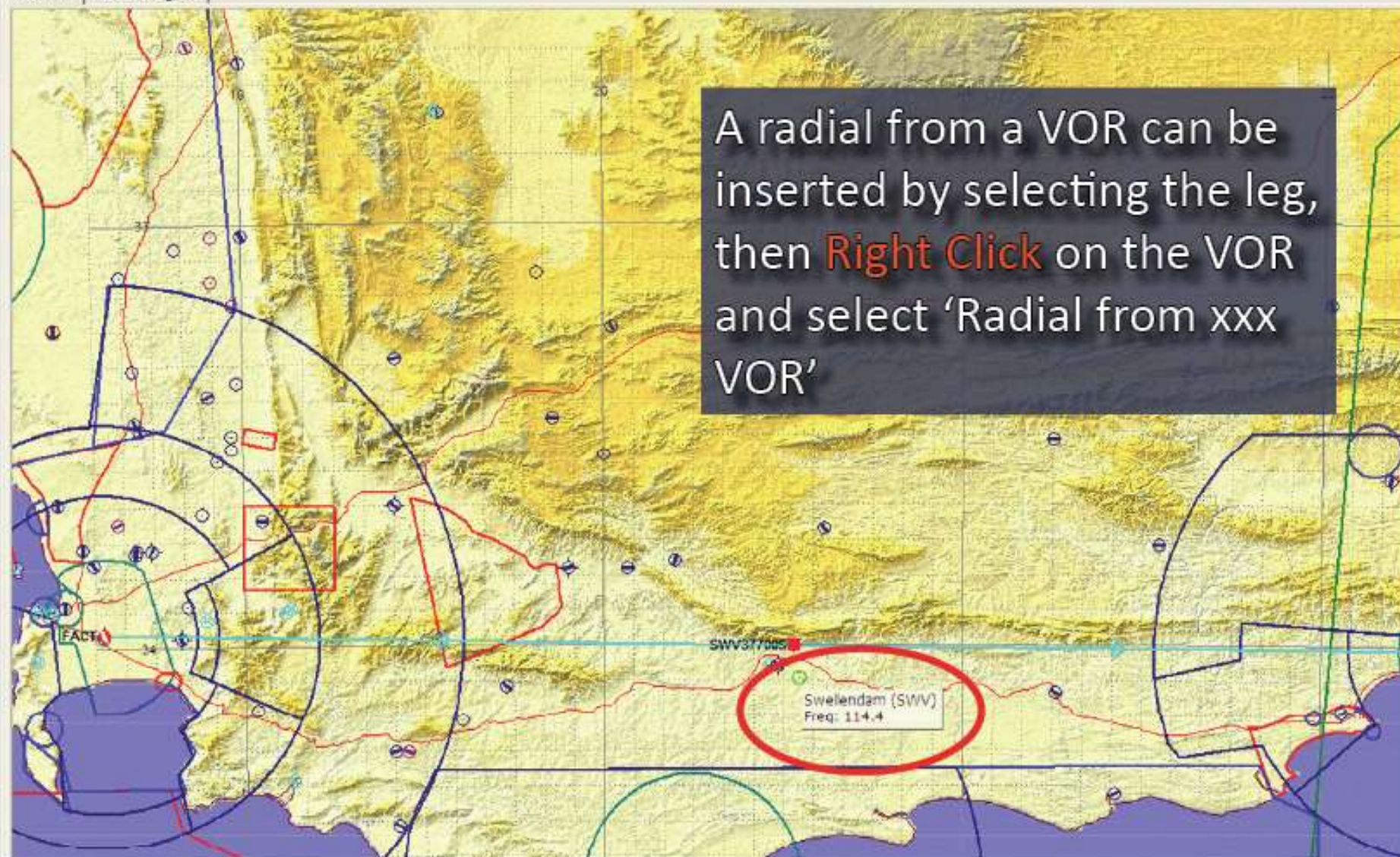
Cancel OK

File Route/Aircraft Points Log Book Easy Cockpit Export Help

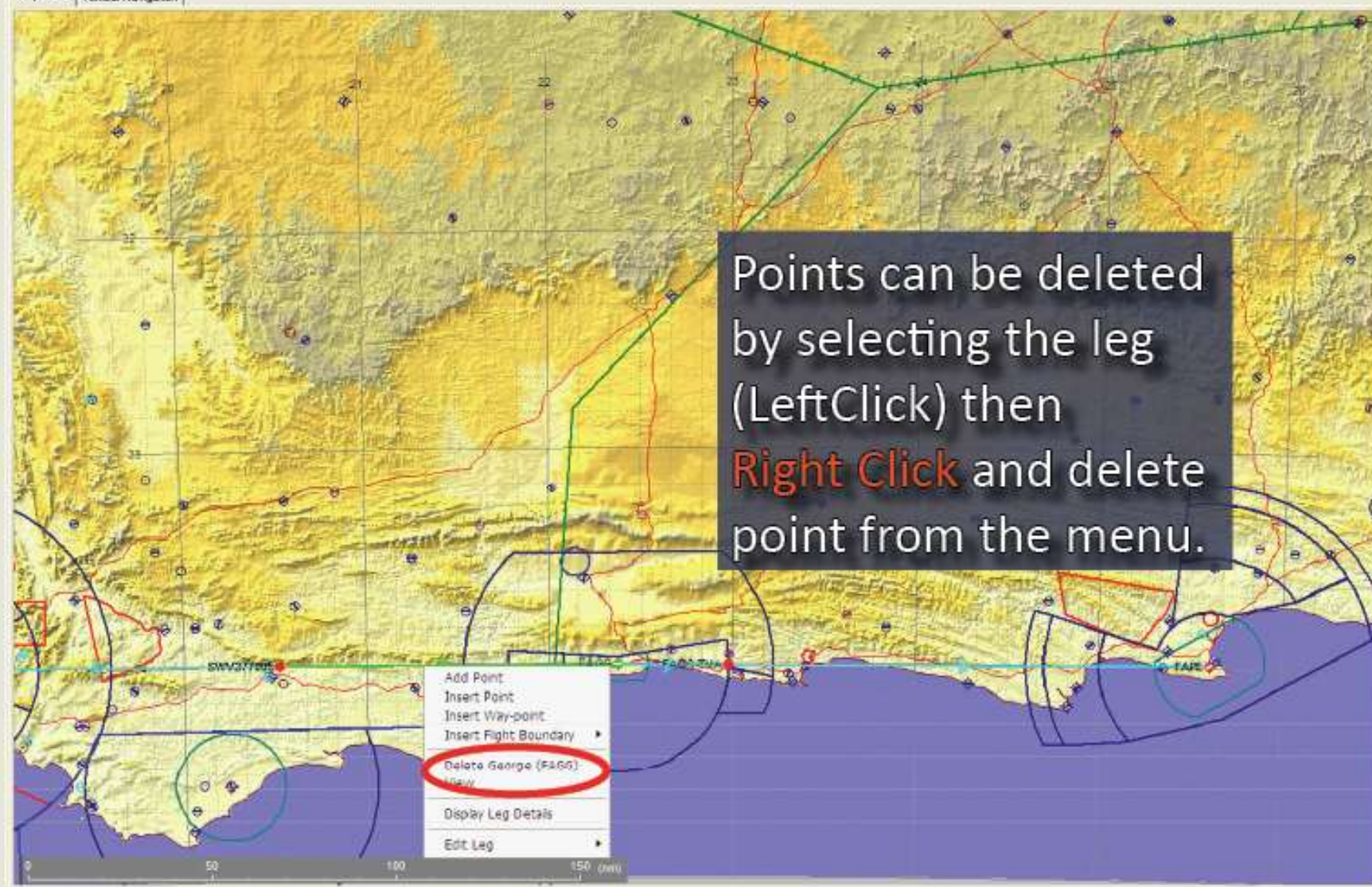


Flight Log Map Flight Plan Aircraft Data GPS Interface Log Book Tools Units + Preferences Test Weather

Map View Vertical Navigation



A radial from a VOR can be inserted by selecting the leg, then **Right Click** on the VOR and select 'Radial from xxx VOR'



File Route/Aircraft Points Log Book Easy Cockpit Export Help

Right Log Map Flight Plan Aircraft Data GPS Interface Log Book Tools Units + Preferences Test Weather

Map View Vertical Navigation

Leg details can be displayed
by selecting the leg, then
Right Click to select "Display
Leg Details" from the menu.

Add Point
Insert Point
Insert Way-point
Insert Flight Boundary
Delete FAJS CENTRAL SIR (FAJS SIR)
Edit
Display Leg Details
Edit Leg

FAJS CENTRAL SIR (FAJS SIR)

In FPL: 0
In EET:
Freq: 120.3
Nav Freq:
Ground Elev: 4452 (feet)
Lat: 528 01.2 (deg S)
Long: E035 44.9 (deg E)
Magnetic Variation: 19.5 (deg W)
Fuel Used: 24.0 (lbs)
Fuel Remain: 86.0 (lbs)
Accum. Distance: 120 (nm)
Distance Remain: 71.5 (nm)
Elapsed Time: 01:15:50
Expected Arrival: 01:15:59
Expected Arrival 1:
Actual Arrival:
Additional Notes:
En Route Info:

FAJS TMA to FAJS CENTRAL SIR

True Airspeed: 110 (knots)
Wind Direction: 0 (deg)
Wind Speed: 0 (knots)
Compass Deviation: 0 (deg)
Fuel Consumption: 24.5 (lbs/hr)
True Track: 207 (deg)
Magnetic Track: 226 (deg)
True From: 27.1 (deg)
True To: 307 (deg)
Magnetic From: 46.6 (deg)
Magnetic To: 334 (deg)
True Heading: 207 (deg)
Magnetic Heading: 226 (deg)
Compass Heading: 226 (deg)
Altitude FL: FL075
Ground Speed: 110 (knots)
Leg Distance: 102 (nm)
Leg Time: 00:55:28

File Route/Aircraft Points Log Book Easy Cockpit Export Help

Flight Log Map Flight Plan Aircraft Data GPS Interface Log Book Tools Units + Preferences Test Weather

Map View Vertical Navigation

Measuring a Distance

Hold down **Left Mouse Click**
AND **Shift Key** at the same
time

Then **move** Mouse to the
point you want to measure
to, while still **holding down**
Shift Key

526 53 23.96 E027 30 24.67 Ground: 4675 feet

Distance: 28.0 (nm) Direction: 137 (deg mag)



Name	Identifier	Freq.	Nav. Freq	Lat. (deg S)	Long. (deg E)	Magnetic Variation (deg V)	True AirSpeed (knots)	Wind Direction (deg)	Wind Speed (knots)	Fuel Used (litres)	Fuel Remains (litres)	Magnetic Track (deg)	Altitude/ FL	Ground Speed (knots)	Leg Distance (nm)	Accum. Distance (nm)	Distance Remain (nm)	Leg Time	Elapsed Time	Expected Arrival
Lanseria Int.	FALA	124.0		S25 56	E027 55	17				18.9	314.2					0	681		00:00:00	14:00:00
FALA TMA	FALA TMA	125.8		S26 13	E027 37	17	160	276	18	26.7	306.4	241	7000FT	148	23	23	658	00:09:27	00:09:27	14:09:27
JHB TMA	JHB TMA	119.5		S26 19	E027 31	17	160	277	19	26.3	302.8	241	7000FT	148	8	31	650	00:03:13	00:12:40	14:12:40
FABL FIR	FABL FIR	119.5		S27 30	E026 18	19	160	278	22	62.1	271.0	242	FL085	148	97	129	653	00:39:58	00:52:37	14:52:37
FAKIV TMA	FAKIV TMA	120.3		S28 28	E026 15	20	160	286	20	67.8	245.3	243	FL085	150	78	207	476	00:31:21	01:23:59	15:23:59
FAKIV TMA	FAKIV TMA	119.4		S29 16	E024 20	20	160	283	15	110.2	222.9	244	FL085	152	66	278	406	00:27:20	01:51:19	15:51:19
FACT FIR	FACT FIR	120.3		S30 50	E022 31	22	160	247	8	153.0	180.1	246	FL085	153	133	409	273	00:52:12	02:43:31	16:43:31
FACT TMA	FACT TMA	126.5		S33 24	E019 20	24	160	266	4	222.9	110.1	248	FL085	157	223	632	50	01:25:15	04:08:46	16:08:46
FACT TMA	FACT TMA	119.7		S33 38	E019 03	24	160	289	11	229.3	103.8	251	FL085	154	26	662	30	00:07:45	04:16:31	16:16:31
FACT TMA	FACT TMA	119.7		S33 45	E018 54	24	160	299	10	232.4	100.8	251	FL048	157	10	662	20	00:03:50	04:20:21	16:20:21
FACT CTR	FACT CTR	119.7		S33 52	E018 44	24	160	300	16	236.0	97.1	251	2500FT	154	11	673	9	00:04:20	04:24:41	16:24:41
Cape Town Int.	FACT	118.1		S33 58	E018 36	24	160	302	18	238.8	94.3	251	1500FT	155	9	681	9	00:03:24	04:28:05	16:28:05

This is the flight log of the flight plan you have just created. Here you can update/change Altitudes/ Flight levels and airspeed (anything in BLUE). You can delete legs, get leg info, take out columns or add columns (by Left Clicking)

This button inserts or removes
Climb & Descent waypoints

File Route/Aircraft Points Log Book Easy Cockpit Export Help



Flight Log Map Flight Plan Aircraft Data GPS Interface Log Book Tools Units Preferences Test Weather

Log Notes

Name	Identifier	Freq.	Alt	Lat	Long	Magnetic Variation (deg W)	True Airspeed (knots)	Wind Direction (deg)	Wind Speed (knots)	Fuel Used (litres)	Fuel Remain (litres)	Magnetic Track (deg)	Altitude FL	Ground Speed (knots)	Leg Distance (nm)	Accum. Distance (nm)	Distance Remain (nm)	Leg Time	Elapsed Time	Expected Arrival
Lanseria Int	FALA	124.0		525.56	E027.55	17				18.8	314.2					0	681		00:00:00	14:00:00
TOCD1	TOCD1	124.0		526.81	E027.50	17	120	278	18	22.6	310.5	241	CLMB	188	7	7	675	00:03:38	00:03:38	14:03:38
FAL & TMA	FAL & TMA	125.8		526.15	E027.37	17	160	278	18	26.2	308.8	241	7000FT	148	17	24	658	00:05:48	00:10:26	14:10:26
JHB TMA	JHB TMA	119.5		526.19	E027.31	17	160	277	15	30.8	302.3	241	7000FT	148	5	31	650	00:13:13	00:13:39	14:13:39
TOCD2	TOCD2	119.5		526.22	E027.28	17	120	278	22	32.0	300.1	241	CLMB	188	4	35	646	00:12:08	00:19:47	14:19:47
FABL FIR	FABL FIR	119.5		527.30	E026.18	18	160	278	22	64.5	268.6	242	FL085	148	94	128	553	00:38:25	00:54:12	14:54:12
FAKM TMA	FAKM TMA	120.3		528.26	E025.15	20	160	288	20	90.2	242.9	243	FL085	150	78	207	475	00:51:21	01:25:33	15:25:33
FAKM TMA	FAKM TMA	110.4		529.18	E024.20	20	160	289	15	112.6	220.6	244	FL085	152	80	278	408	00:27:20	01:52:54	15:52:54
FACT FIR	FACT FIR	120.3		530.60	E022.31	22	160	247	8	155.4	177.7	246	FL085	153	133	409	273	00:52:12	02:45:06	16:45:06
FACT TMA	FACT TMA	126.5		533.24	E019.20	24	160	288	4	225.3	107.8	249	FL085	157	223	832	50	01:25:15	04:10:21	16:10:21
DES04	DES04	126.5		533.32	E019.11	24	160	289	11	228.8	104.3	251	FL085	154	11	842	39	00:04:12	04:14:33	16:14:33
FACT TMA	FACT TMA	119.7		533.38	E019.03	24	170	289	11	230.9	102.2	251	DESC	164	9	662	30	00:03:20	04:17:53	16:17:53
DES03	DES03	119.7		533.41	E018.56	24	160	295	10	232.6	100.9	251	FL045	157	5	657	25	00:02:03	04:15:36	16:15:36
FACT TMA	FACT TMA	119.7		533.45	E018.54	24	170	298	10	233.6	99.5	251	DESC	167	5	662	20	00:01:40	04:21:36	16:21:36
DES02	DES02	119.7		533.51	E018.48	24	160	300	18	236.4	96.6	251	2500FT	154	9	670	11	00:03:27	04:25:03	16:25:03
FACT CTR	FACT CTR	119.7		535.62	E018.44	24	170	300	18	237.5	96.1	251	DESC	164	2	679	9	00:00:50	04:26:53	16:26:53
DES01	DES01	119.7		535.66	E018.39	24	160	302	16	238.8	94.3	251	1500FT	155	6	678	3	00:02:12	04:28:05	16:28:05
Cape Town Int	FACT	118.1		535.68	E018.38	24	170	302	16	239.5	93.6	251	DESC	165	3	681	0	00:01:07	04:29:13	16:29:13

TIP:

You will not be able to insert multiple Climb & Descent waypoints when a fuel stop has been included.

With this button you can enable or disable
Alternate Destination

File Route/Aircraft Points Log Book Easy Cockpit Export Help



Flight Log Map Flight Plan Aircraft Data GPS Interface Log Book Tools Units + Preferences Test Weather

Log Notes

Name	Identifier	Freq.	Nav Freq	Lat (deg S)	Long. (deg E)	Magnetic Variation (deg W)	True Airspeed (knots)	Wind Direction (deg)	Wind Speed (knots)	Fuel Used (litres)	Fuel Remain (litres)	Magnetic Track (deg)	Altitude/ FL	Ground Speed (knots)	Leg Distance (nm)	Accum. Distance (nm)	Distance Remain (nm)	Leg Time	Elapsed Time	Expected Arrival
Lanseria Intl.	FALA	124.0		S25 56	E027 55	17				18.9	314.2					0	661		00:00:00	14:00:00
TOC01	TOC01	124.0		S26 01	E027 50	17	120	276	18	22.6	310.5	241	CLIMB	108	7	7	675	00:03:38	00:03:38	14:03:38
FALA TMA	FALA TMA	125.8		S26 13	E027 37	17	160	276	18	26.2	304.9	241	7000FT	148	17	23	658	00:06:48	00:10:26	14:10:26
JHB TMA	JHB TMA	119.5		S26 19	E027 31	17	160	277	19	30.8	302.3	241	7000FT	148	8	31	650	00:03:13	00:13:39	14:13:39
TOC02	TOC02	119.5		S26 22	E027 28	17	120	278	22	33.0	300.1	241	CLIMB	106	4	35	646	00:02:08	00:15:47	14:15:47
FABL FIR	FABL FIR	119.5		S27 30	E028 18	19	160	278	22	64.5	268.6	242	FL085	148	94	129	553	00:38:25	00:54:12	14:54:12
FAKM TMA	FAKM TMA	120.3		S28 26	E028 15	20	160	286	20	90.2	242.9	243	FL085	150	78	297	475	00:31:21	01:25:33	15:25:33
FAKM TMA	FAKM TMA	119.4		S28 16	E024 20	20	160	280	15	112.6	220.5	244	FL085	152	69	276	496	00:27:20	01:52:54	15:52:54
FACT FIR	FACT FIR	120.3		S30 50	E022 31	22	160	247	8	185.4	177.7	246	FL085	153	133	499	273	00:52:12	02:45:06	16:45:06
FACT TMA	FACT TMA	126.5		S33 24	E019 20	24	160	268	4	225.3	107.8	249	FL085	157	223	632	50	01:26:15	04:10:21	18:10:21
DES04	DES04	126.5		S33 32	E019 11	24	160	289	11	228.8	104.3	251	FL085	154	11	642	39	00:04:12	04:14:33	18:14:33
FACT TMA	FACT TMA	119.7		S33 36	E019 03	24	170	288	11	230.9	102.2	251	DESC	164	9	652	30	00:03:26	04:17:53	18:17:53
DES03	DES03	119.7		S33 41	E018 56	24	160	299	10	232.6	100.5	251	FL045	157	5	657	26	00:02:03	04:19:56	18:19:56
FACT TMA	FACT TMA	119.7		S33 45	E018 54	24	170	299	10	233.8	99.5	251	DESC	167	5	662	20	00:01:46	04:21:36	18:21:36
DES02	DES02	119.7		S33 51	E018 46	24	160	300	15	236.4	95.6	251	2500FT	154	9	670	11	00:03:27	04:25:03	18:25:03
FACT CTR	FACT CTR	119.7		S33 52	E018 44	24	170	300	15	237.0	95.1	251	DESC	164	2	673	9	00:00:50	04:25:53	18:25:53
DES01	DES01	119.7		S33 56	E018 39	24	160	302	15	238.6	94.3	251	1500FT	155	6	678	3	00:02:12	04:28:05	18:28:05
Cape Town Intl.	FACT	118.1		S33 58	E018 38	24	170	302	15	239.5	93.6	251	DESC	165	3	681	0	00:01:07	04:29:13	18:29:13
George	FA00	118.9		S34 00	E022 22	25	160	302	15	242.7	40.3	115	FL075	173	188	869	-188	01:04:57	05:34:06	19:34:06

Alternate Destination airports
are marked in **RED**!

Aircraft info

7 Aircraft identification 8 Flight rules ? Type of Flight ? ☐ Print Blank Form

9 Number Type of aircraft ? Wake turbulence cat ? 10 Equipment ?

Route info

13 Departure aerodrome Time

15 Cruising speed Level

Route

DCT 2613S02737E 2618S02731E/N0125F005 2826S02515E
2916S02420E 3324S01920E 3336S01903E/N0125F045 3345S01854E/N0125A025
3352S01844E/N0125A015 DCT

16 Destination aerodrome Total est Altn. aerodrome

18 Other information

RMK/SAR NML

Supplementary info

19 Endurance Persons on board Emergency Radios ☐ UHF ☐ VHF ☐ Elba

Life Jackets


☒ None ☐ Light ☐ Flares ☐ UHF ☐ VHF

Survival Equipment

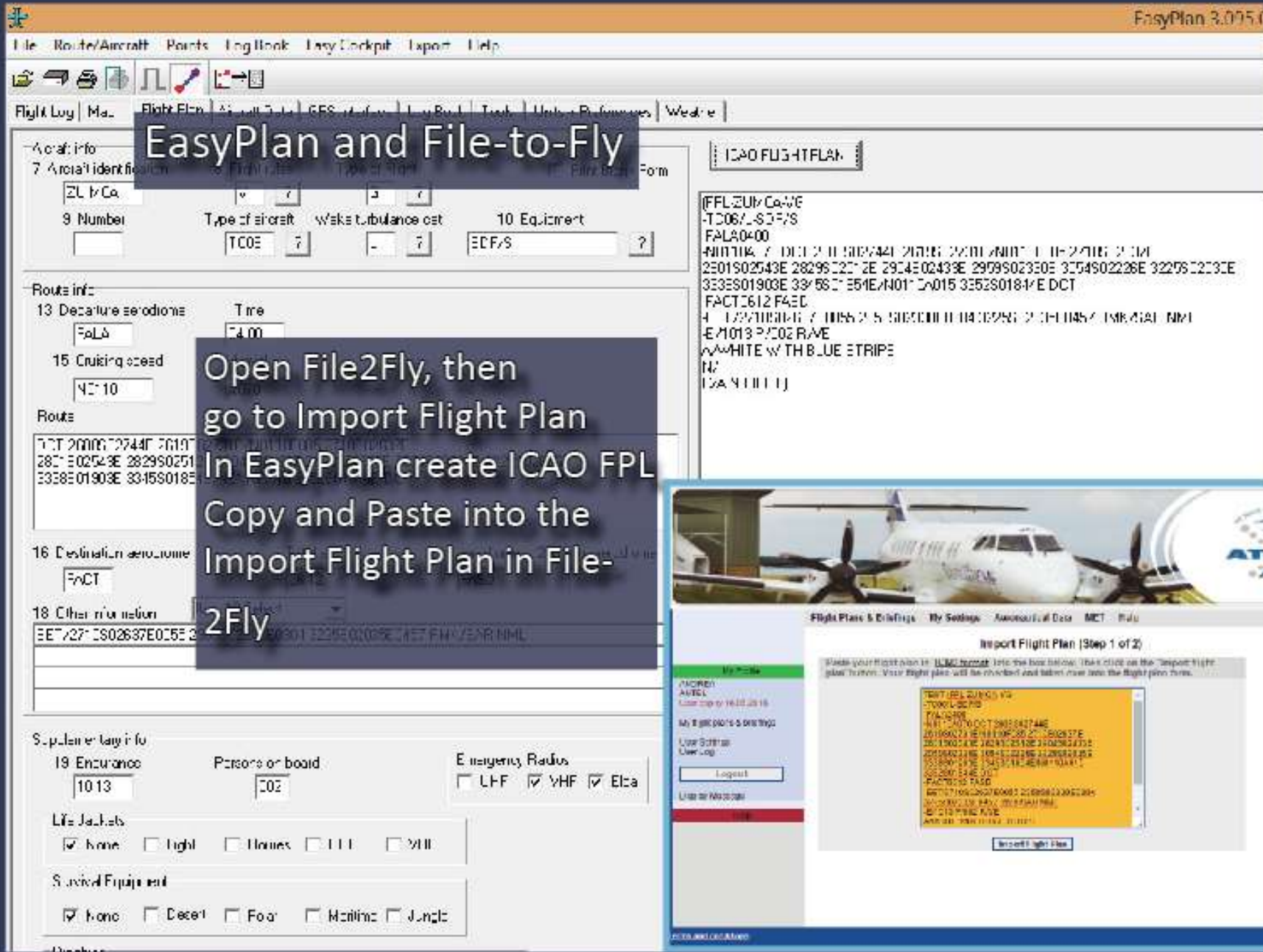
☒ None ☐ Desert ☐ Polar ☐ Maritime ☐ Jungle

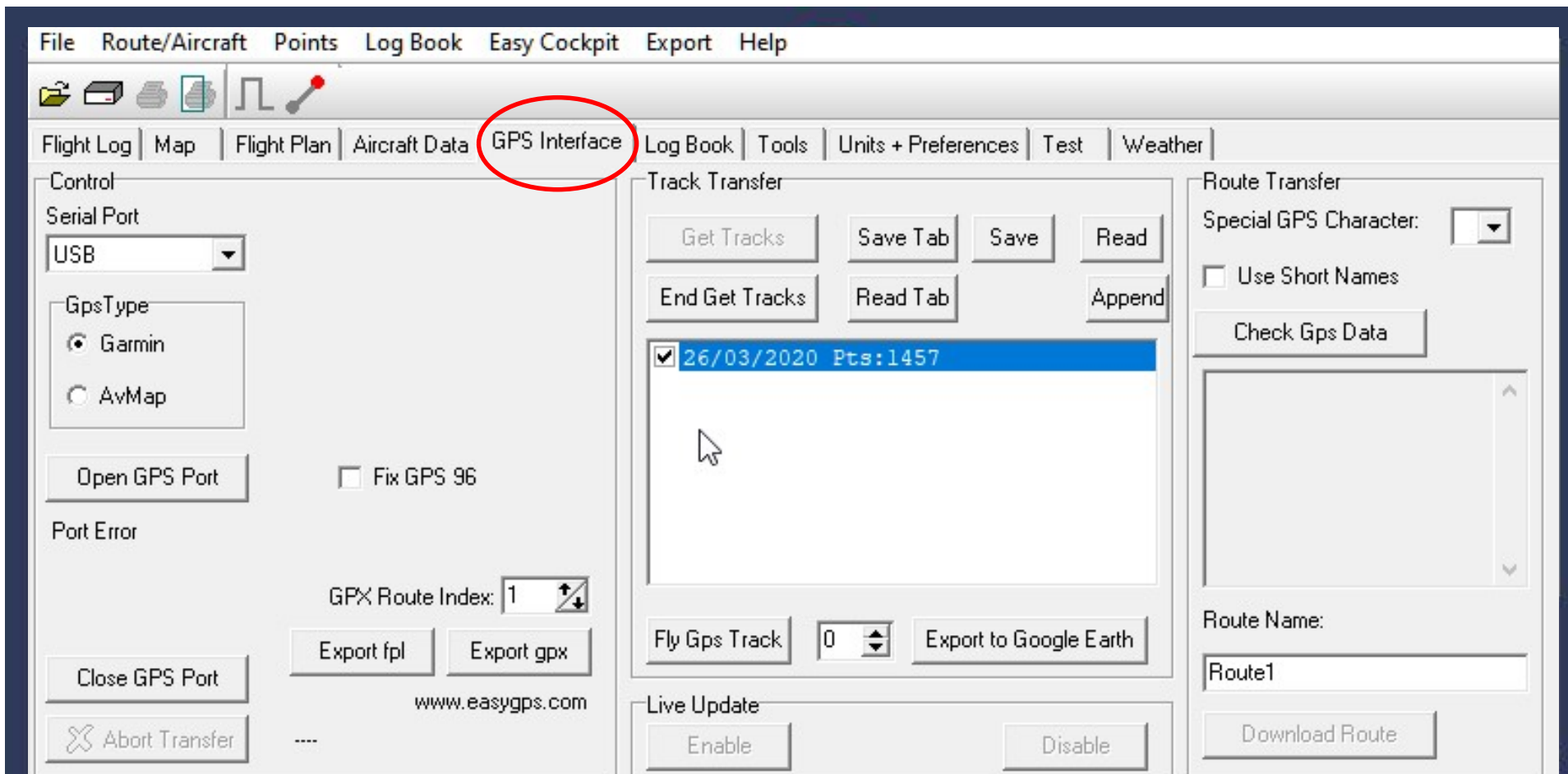
Create a Flight Plan
ready to be sent to
ATC.

Warning

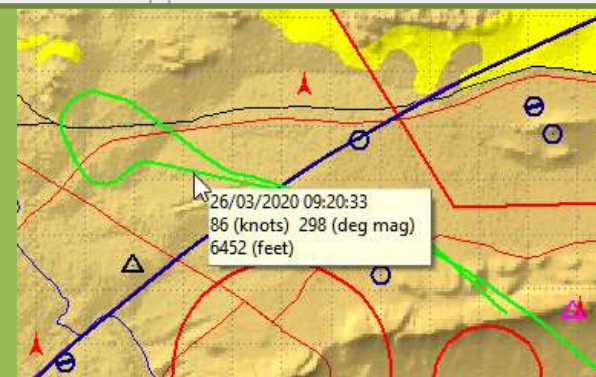
 Distance to: FACT TMA greater than 200nm
Put FACT FIR in Flight Plan?

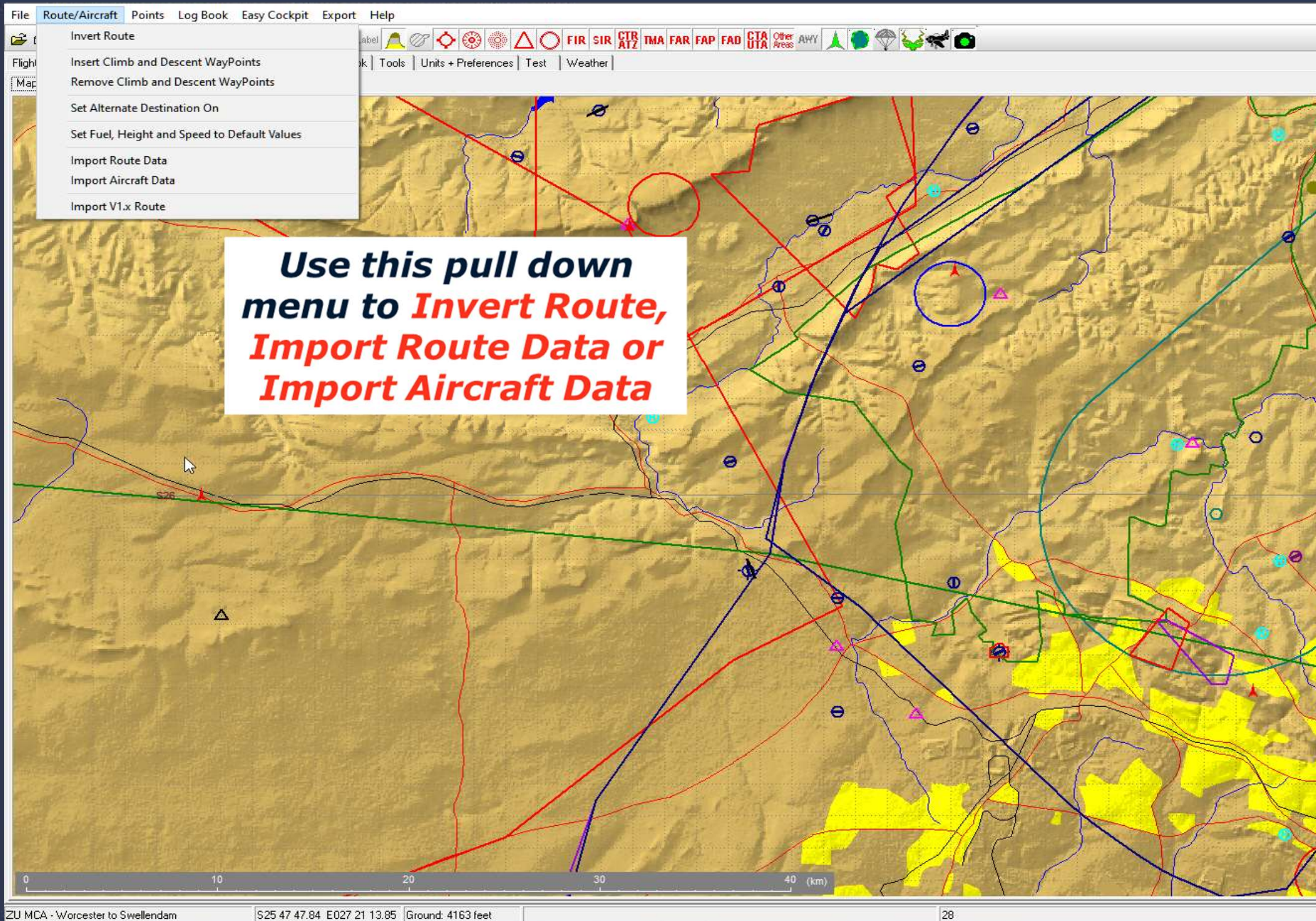
Warnings will be
displayed if parameters
are missing





Certain external GPS devices (Garmin, Avmap, Lowrance) can be connected to your computer and EasyPlan in order to load/copy flight plans onto the GPS. You can also export flight plans to other GPS via the EXPORT tab saving to a SD card, using GPX, Map Source, MGL Enigma. Information on how to do this is provided in the Help EasyPlan manual within the software. To view recorded flight tracks from your GPS or EasyCockpit in EasyPlan, READ the saved .trk files.





File Route/Aircraft Points Log Book Easy Cockpit Export Help

Label Tools Units + Preferences Test Weather

Invert Route

Insert Climb and Descent WayPoints

Remove Climb and Descent WayPoints

Set Alternate Destination On

Set Fuel, Height and Speed to Default Values

Import Route Data

Import Aircraft Data

Import V1.x Route

New Points can be added in this menu: name it, select kind of point and add all relevant information.

Under Latitude and Longitude, fill in all the digits in all cells in the correct Format. Incorrect data might result in an error message.

When you add in your own airfield information, don't forget to send details to Aviation.Direct as well! Because Information like caution notes, runway details and threshold co-ordinates can only be added by us.

Name: XYZ Point

Country: FA South Africa

Identifier:

Latitude: S26 28 00.00 deg

Longitude: E028 26 00.00 deg

Frequency: (NDB, VOR, COM):

Elevation: feet

Info File: Open New

Picture File: Open New

Save Cancel Close

h map

ZU MCA - Worcester to Swellendam S25 47 47.84 E027 21 13.85 Ground: 4163 feet 28

File Routes/Aircraft Points Log Book Easy Cockpit Export Help



Flight Log Map Flight Plan Aircraft Data GPS Interface Log Book Tools Units + Preferences Test Weather

Map View Vertical Navigation

Points can be viewed in here!
Note that only User Points can be edited or deleted.

Viewing Point

Keisefontein (FAKF)

Keetmanshoop (FYKT)
Keetmanshoop (KT)
Keetmanshoop (KTV)
Kai Mouth (FAKE)
Kenhardt (Kenha)
Kenilworth Race Course
KENOT
Kenton-On-Sea (FAKX)
KEPOK
Keisefontein (FAKF)
Kea (FVKZ)
KGL
Kgoro Pan (Kgoro)
Kgweddi (Kgwed)
Khami
Khoka Moya (Manyeleti) (Khoka)
Khorikas (FYKK)
Khumib (FYKJ)

Display

☒ ALL
☐ Airfield
☐ VOR
☐ NDB
☐ Reporting
☐ VFR
☐ User
☐ Microlight
☐ Helipoint

Sort By

☒ Name
☐ Ident.

Name: Keisefontein

Country: FA South Africa

Identifier: FAKF

Latitude: 532 53.0 deg

Longitude: E18 19.0 deg

Frequency: 122.5 (NDB, VOR, COM)

Elevation: 43 feet

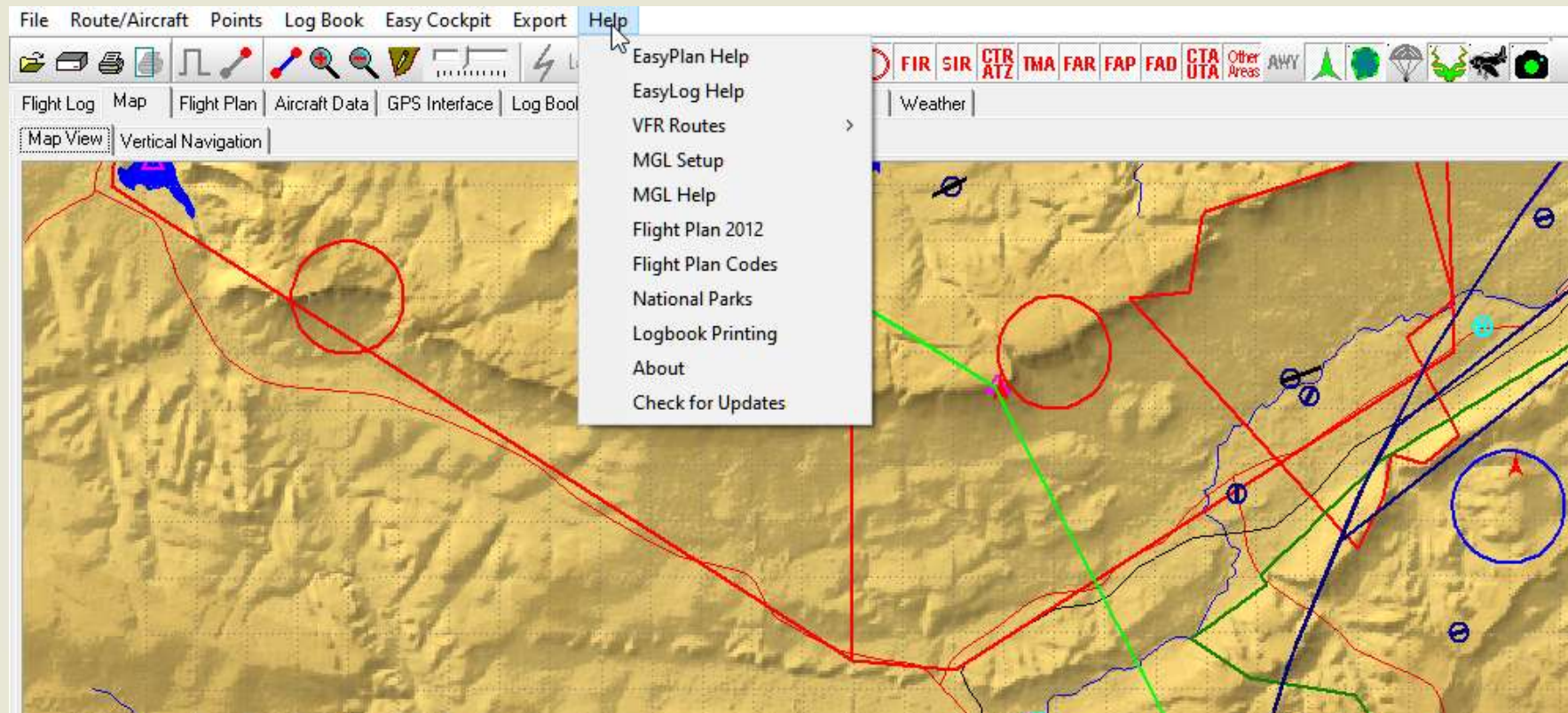
Info File: Keisefontein

Picture File: Keisefontein

Type Of Point

☒ Airfield
☐ Licensed Airfield
☐ VOR
☐ VOR + DME
☐ NDB
☐ Reporting
☐ Other
☐ VFR Reporting
☐ Microlight
☐ Helipoint

In the **Help** tab, the user manual and other important information can be accessed





Flight Log

☐ Offset Columns☐ Display Short Headings☒ Print Clearances☒ Print Notes☒ Print Airfield Info

Print Size of Info

☐ Small☒ Medium☐ Large☐ X Large

Flight Log Print Format

☐ Original☐ Fixed Format 1☐ Fixed Format 2☐ Gyrocopter☒ Part135

- ☒ Name
☒ Designation
☐ In Flight Plan
☐ In EET
☒ Frequency
☒ Nav Frequency
☒ Elevation
☐ Latitude
☐ Longitude
☐ Magnetic variation
☒ True Air speed
☐ Wind direction
☐ Wind speed
☐ Compass deviation
☐ Fuel Consumption
☒ Fuel Used
☐ Fuel Remaining
☒ True track
☒ Magnetic track
☐ QTE
☐ QUJ
☐ QDR
☐ QDM
☐ True heading
☐ Magnetic heading
☐ Compass heading
☒ Height / Altitude
☒ Ground speed
☒ Leg Distance
☒ Accumulated distance
☐ Distance Remaining
☒ Leg time
☐ Elapsed time
☒ Expected arrival
☐ Expected arrival 1
☐ Actual arrival
☐ Additional Notes
☐ En Route Info
☒ Fuel to Destination
☒ Min Safe Altitude
☐ Grid Mora

Set Columns back to Default

- New
 Open
 Reopen
 Save
 Save As

Print

Copy Image to Clipboard

Copy Route Text to Clipboard

Exit

Identifier	Freq.	Nav. Freq	Ground Elev. (feet)
	18.70		5483
Sandton City Tower	23.70		5298
Eagle's Creek	25.80		4855
East of Copperleaf Gc	23.70		4659
Gerotek Test Track	123.70		4547
Brits	FABS	124.20	3740

You have various options to print your flight log. The **Original** format is like you Flight log in EasyPlan and the column can be changed as per requirements. All other formats are FIXED and cannot be changed.

[illegible]

Logbook

You can keep different logbooks,
e.g. your default normal logbook for fixed wing, a rotary logbook for your helicopter hours, or a gliding/microlight logbook.
Please refer to the Logbook information in the EasyPlan Manual.
You can print out your license renewal forms which are already filled in with your details.