



SETTINGS : RECORD TRACK

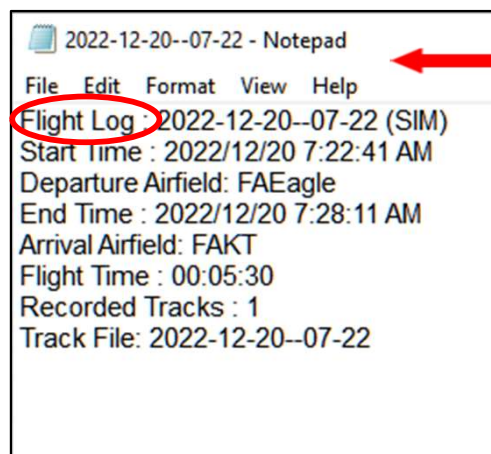
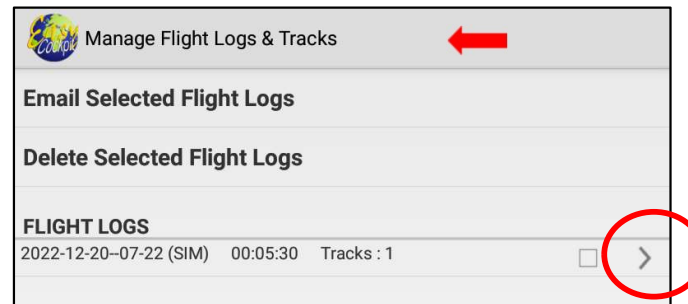
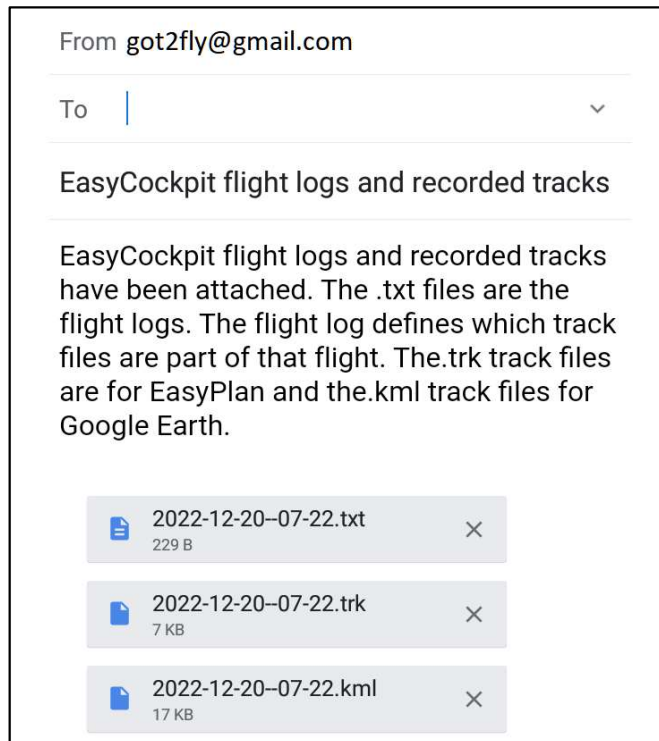
A **Flight Log File** of every flight is automatically created and saved (even if (Record Track is OFF)).

Record Track needs to be **selected** if you would like to have a record of your flight to be viewed in EasyPlan, Google Earth and EasyCockpit after your flight.

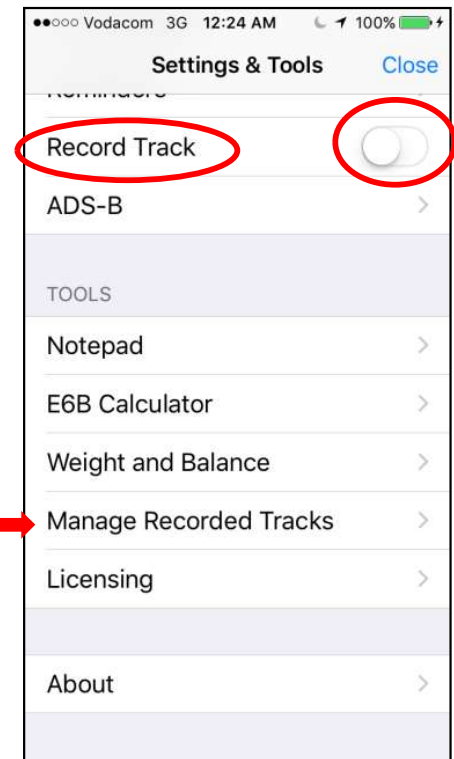
If the track is recorded, it is automatically linked to the Flight Log File which contains various file formats.

TOOLS : MANAGE FLIGHT LOGS & TRACKS

Email : Once you have flown with your **Record Track ON**, these flight Logs can be emailed to an email address of your choice. Easy Cockpit automatically creates 3 file formats (.txt for the Flight Log, .trk for EasyPlan & .kml for Google Earth) all of which will be attached to the email sent. (see next page)



Select the arrow here to show your Flight Logs on the mobile device.



Delete : In EasyCockpit you may delete recorded Flight Logs that are no longer required. Select the Flight Logs



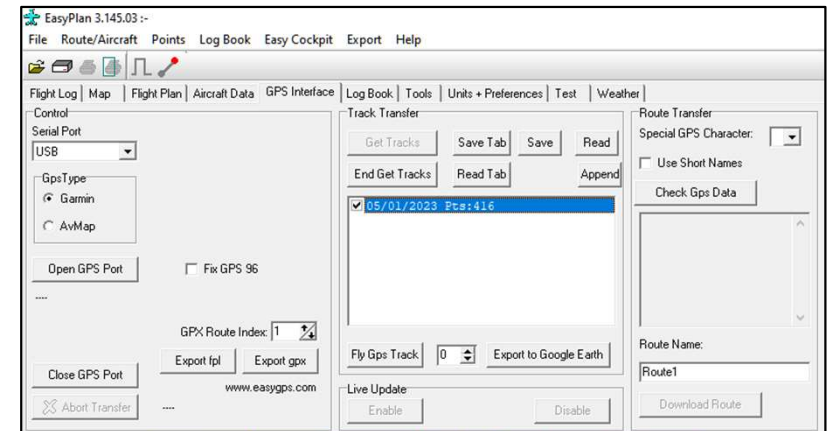
TOOLS : MANAGE FLIGHT LOGS & TRACKS (cont.)

Email : Your emailed Flight Log contains 3 different file formats:

- .txt - the Flight Log record are text files and will open in Notepad or similar
- .trk - a track file which can be viewed in EasyPlan and shows your flight path
- .kml - to be viewed in Google Earth.

Save the .trk file for EasyPlan (if you have EasyPlan installed on your Windows PC) into *My Documents/EasyPlan3 Folder*. Select **GPS Interface** on your EasyPlan toolbar, then Select **Track Transfer** and READ. Select the .trk file saved previously.

When selected, the .kml file will automatically open in **Google Earth**, if Google Earth is installed on your computer.

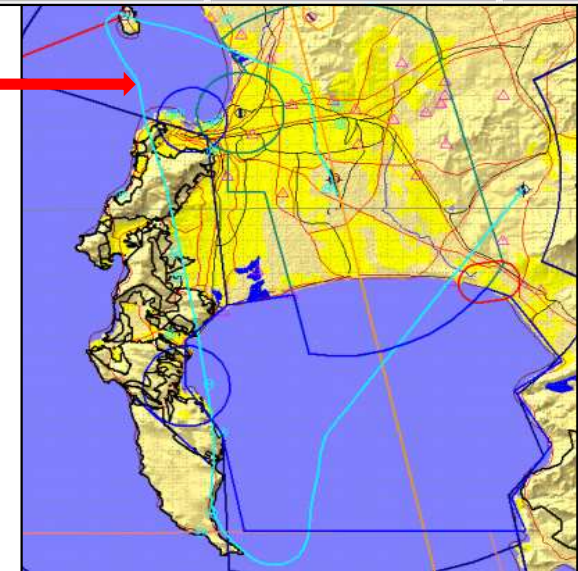


EasyCockpit view as the Yellow/Orange line

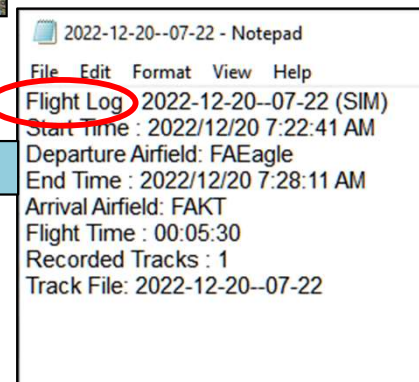


EasyPlan view as a turquoise line

Google Earth View



Your Flight Log will open in Notepad as a text file



NOTE: Flight Tracks/Logs which are NOT RECORDED will not export as .kml or .trk, but only as a .txt file.



SETTINGS : ADS-B – South Africa

As of June 2025, all aircraft operating in the Africa/Indian Ocean (AFI) region must be ADS-B compliant and will not be able to operate in RVSM, Class A or C Airspace, unless compliant.

All RVSM aircraft must be fully compliant by 15 June 2023

- All Aircraft flying IFR in South African Class A, B, C or E airspace must carry a serviceable ADS-B Transponder which includes Mode S.

- All Aircraft flying above 10,000ft MSL must be ADS-B **IN** and **OUT** compliant.

- ADS-B in South Africa is Satellite based and not Ground based.**

- South Africa will only be operating on the 1090ES ADS-B network.

- This standard will expressly exclude the use of Universal Access Transceivers (UAT) that operate on 978 MHz.

Vodacom 3G

4:00 PM

87%

Settings & Tools

ADS-B Traffic

SETTINGS

Display ADS-B Traffic

Max Horizontal Range nm

Max Vertical Range ft

45

35000

TRAFFIC REPORTS

Call Sign	Alt	VSI	GS	Track
SAA028	19875	2176	377	011°
SAA171	7725	-64	233	195°
SAA347	10125	3136	294	248°
SAA547	7850	384	249	139°

ADS-B Traffic:

With an ADS-B (IN) Receiver in your aircraft, EasyCockpit shows ADS-B traffic which displays other aircraft on your screen. This adds an additional layer of situational awareness to aircraft operating in busy airspaces. The BLUE arrow symbol with a flag shows the position of Other Traffic and if a/c is climbing or descending and by how many ft/min. If other traffic is close to your position, it changes to YELLOW. Extended arrow in the front indicates the speed. The longer the line the faster the aircraft.

